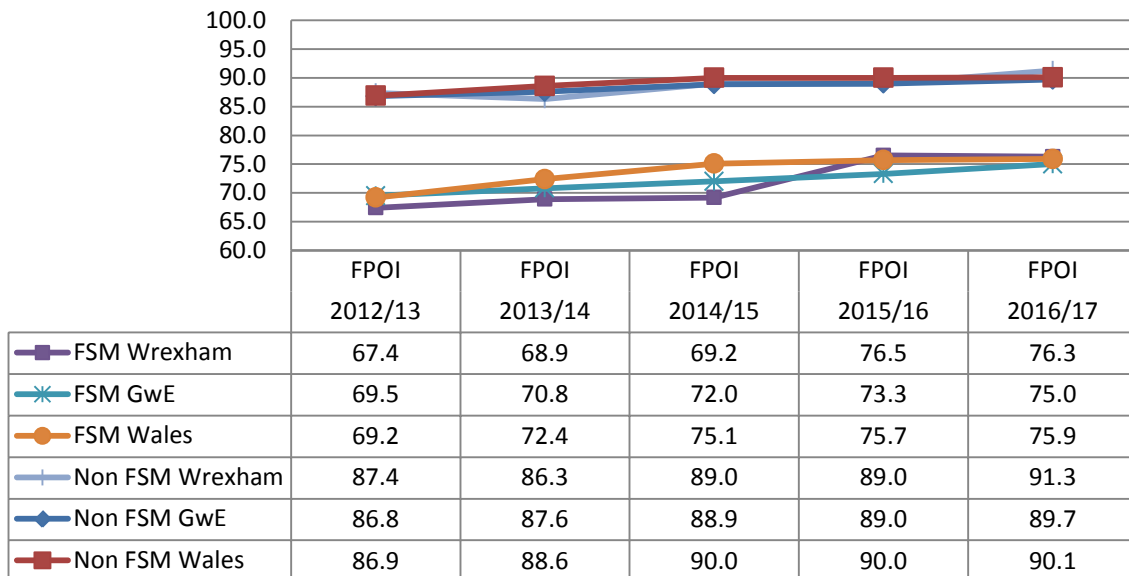
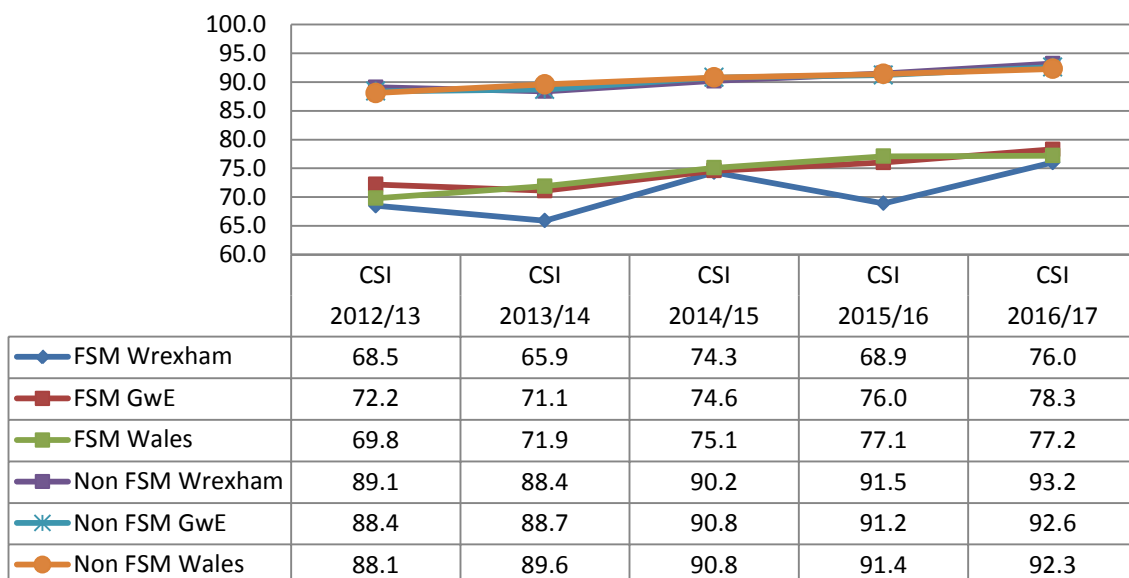


Performance of pupils entitled to free school meals against non- free school meals in Wrexham compared with the Wales average for all phases.

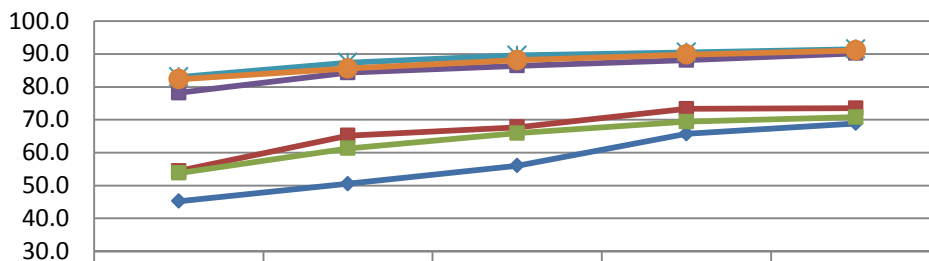
### Foundation Phase FSM / non FSM Trend (FPOI)



### Key Stage 2 FSM / non FSM Trend (CSI)

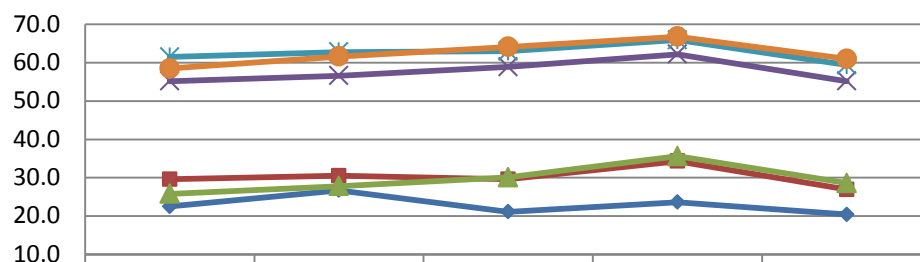


### Key Stage 3 FSM / non FSM Trend (CSI)



	CSI 2012/13	CSI 2013/14	CSI 2014/15	CSI 2015/16	CSI 2016/17
FSM Wrexham	45.2	50.5	56.0	65.7	68.9
FSM GwE	54.4	65.2	67.7	73.3	73.5
FSM Wales	53.8	61.3	65.9	69.4	70.8
Non FSM Wrexham	78.2	84.3	86.4	88.1	90.2
Non FSM GwE	83.0	87.4	89.6	90.5	91.5
Non FSM Wales	82.3	85.6	88.1	89.8	91.1

### Key Stage 4 FSM / non FSM Trend (Level 2 Inclusive)



	Level 2+ 2012/13	Level 2+ 2013/14	Level 2+ 2014/15	Level 2+ 2015/16	Level 2+ 2016/17
FSM Wrexham	22.5	26.7	21.1	23.6	20.4
FSM GwE	29.6	30.5	29.6	34.3	26.9
FSM Wales	25.8	27.8	30.1	35.6	28.6
Non FSM Wrexham	55.2	56.6	58.9	62.2	55.2
Non FSM GwE	61.5	62.8	63.0	65.9	59.4
Non FSM Wales	58.5	61.6	64.1	66.8	61.0

## Key Stage 4 FSM / non FSM Trend (Level 2 Threshold)

