

## APPENDIX 2



**Working together to make Wrexham  
a place that is safe and inclusive**

**2018 – 2019**

## Foreword

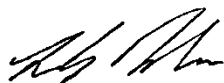
This is the 2018 – 2019 Wrexham Community Safety Partnership Plan. We are a partnership who work together to meet the current and future Community Safety challenges that we face in our county borough.

Community Safety is changing across Wales and the UK. The Crime and Disorder Act (1998) originally established Community Safety Partnerships however the social, political, economic and environmental conditions are now significantly different to those in 1998. Present day challenges for community safety partnership working in Wales were cited in 'Working Together for Safer Communities'. A Welsh Government review of community safety partnership working in Wales that was published in December 2017 as:

“the growing influence of devolution; a wider range of new ‘crime types’ such as modern slavery and hate crime; the escalating threat from international terrorism; and the influence of new psychoactive substances and cyber-enabled offending, to name a few. Public service structures in Wales have substantially altered since the late 1990s and there have been numerous alterations to the primary legislation itself.”

In Wrexham, our work takes direction from the North Wales Police and Crime Commissioners Plan (2017-2021) and the North Wales Safer Communities Board (NWSCB) Plan (2017-2021) as well as current and emerging national and Wrexham specific issues which cut across the community safety and safeguarding areas of responsibility.

This plan outlines the work that we undertake in partnership across Wrexham to meet our vision of making Wrexham a place that is safe and inclusive.



**Lee Robinson**

**Chair of Wrexham Community Safety Partnership (CSP)**

## What is the Wrexham Community Safety Partnership (CSP)?

The Wrexham CSP has a statutory responsibility to undertake an annual review of Crime and Disorder, and to be aware of the nature of Crime and Disorder, anti-social behaviour, and the misuse of drugs within the county borough. The CSP will identify and implement effective actions to reduce these problems and direct resources to address them and this plan outlines what this will look like.

The membership of the CSP includes:

- North Wales Police
- Wrexham County Borough Council
- Betsi Cadwaladr University Health Board
- National Probation Service
- Wales Community Rehabilitation Company
- North Wales Fire and Rescue Service
- AVOW
- North Wales Area Planning Board (APB)
- HMP Berwyn

## Our Ways of Working

Our ways of working are led by the Well-Being of Future Generations (Wales) Act 2015, that asks public bodies to ensure that when making decisions, they take into account the impact they will have on our future generations (the Sustainable Development principle). As a CSP we follow the five ways of working outlined in the act to ensure we work in a sustainable way:

**Long Term** – We will balance short-term needs with the need to safeguard our ability to also meet longer term needs.

**Prevention** – We will act, whenever possible, to prevent problems occurring or getting worse.

**Integration** – We will consider how our differing individual organisational objectives may impact upon our collective objectives, or the objectives of other public bodies.

**Collaboration** – We will collaborate with people and organisations that can help us meet our collective objectives.

**Involvement** – We will listen to, and work to involve people with an interest in achieving our objectives, and ensure that those people reflect the diversity of our county borough.

## National Context – Review of Community Safety

In 2016 the Welsh Audit Office published a report “Community Safety in Wales” that suggested community safety partnerships (CSPs) in Wales, were not as effective as they could or should be and highlighted a number of areas for significant improvement. In response, the Welsh Government advised it would undertake a wider review of Community Safety and reform to “move the community safety agenda forward” and respond to the Auditor General’s recommendations. This review was published in December 2017 and can be seen [here](#).

The main findings for local Community Safety Partnerships was that CSPs should ensure they are:

- Evidence-based and intelligence-led;
- Supported by appropriate skills & knowledge;
- Sustainably resourced and locally appropriate;
- Engaging and involving citizens;
- Preventative and intervening as early as possible;
- Focused on long-term improvements and benefits.

## National Context – County Lines

In July 2017 the Home Office produced [County Lines Guidance](#). County lines is the police term for urban gangs supplying drugs to suburban areas and market and coastal towns using dedicated mobile phone lines or “deal lines”. It involves child criminal exploitation (CCE) as gangs use children and vulnerable people to move drugs and money. Gangs establish a base in the market location, typically by taking over the homes of local vulnerable adults by force or coercion in a practice referred to as ‘cuckooing’. In 2017 work was undertaken to understand the County Lines issues in North Wales and this plan picks this up as a local area of work. County Lines cross cut many of our priorities and we aim to promote a better understanding of the work around County Lines to enable officers to refer information and / or intelligence to the appropriate agencies.

## **National Context – Prevent Duty**

The [Counter-Terrorism and Security Act 2015](#) contains a duty on specified authorities, many of who are members of the CSP, to have due regard to the need to prevent people from being drawn into terrorism. This is also known as the Prevent duty. In March 2015, the UK Parliament approved guidance about how specified authorities are to comply with the Prevent duty. The guidance was revised in July 2015 and can be found here: [UK Government PREVENT factsheet](#)

## **National Context – Modern Slavery Duty**

The Modern Slavery Act received Royal Assent from the UK Parliament in March 2015 and provides the tools to fight modern slavery, ensure perpetrators can receive suitably severe punishments, and enhance support and protection for victims. Further information can be found here: [UK Government Modern Day Slavery information](#).

## **National Context – Human Rights Act 1998 and Equality Act 2010: Public Sector Equality Duty**

The Equality Act 2010 protects people from being treated less favourably because of certain characteristics.

The Human Rights Act 1998 sets out the fundamental rights and freedoms that everyone in the UK is entitled to.

In the courts the Equality Act 2010 (and all other primary UK legislation) is interpreted in ways that are compatible with the Human Rights Act.

This plan is underpinned by the principle of equality and reflects our commitment to promote equality and act in a way that is compatible with people's Human Rights across all of our work.

## Local Context

This plan has been developed in conjunction with:

- i. **North Wales Police and Crime Commissioners Priorities (2017 – 2021).** The North Wales PCC has identified 5 priorities for North Wales Police:
  - Domestic Abuse
  - Modern Slavery
  - Organised Crime
  - Sexual Abuse (including Child Sexual Exploitation)
  - Delivering Safer Neighbourhoods
  
- ii. **North Wales Safer Communities Board Plan (2017 – 2021)** takes direction from the PCC plan and is looking on a regional basis at the PCC's 5 priorities. This plan includes:
  - Organised crime: Technology enabled crime; Drugs and alcohol; Counter Terrorism and Drug Supply
  - Delivering Safer Neighbourhoods: Community tension monitoring; Hate crime; Supporting families and children at risk of Adverse Childhood Experiences (ACE's); Reduce reoffending; Youth justice; Migration changes.
  
- iii. **North Wales Police Strategic Assessment (September 2017)** identified as high priorities for North Wales:
  - Organised drug supply
  - Modern day slavery (MDS)
  - Domestic Abuse
  
- iv. **Counter Terrorism Local Profile (CTLP)**
  
- v. **The Wrexham Public Services Board (PSB) well-being assessment (2017).** This is a broad document considering social, economic, environmental and cultural well-being in Wrexham. Some of the issues relevant to this plan include:
  - Our communities are changing. For example there are up to 150 people in Wrexham seeking asylum at any one time with limited support and this is a trend that will continue.
  - There will be a growing number of online and offline CSE offences; partly from heightened awareness and partly from a genuine increase in offending. The continued growth in availability and affordability of internet enabled technologies

such as smart phones and tablets are critical enablers, as is increasing access to social media.

- Domestic abuse is under reported. The introduction of the benefit cap and other welfare reforms may make victims more likely to stay with their abuser if they can't afford to move. Universal credit will be paid to one partner that may increase a victim's financial reliance on their abuser. Changes to legal aid rules may mean that more victims may stay with the perpetrator because legal aid will not be routinely available in separation, divorce and child contact cases, or for non-British victims not on a spousal visa.
- A new concern for health and wider community well-being are the New Psychoactive Substances or NPS.
- In the 'What's Important To You?' consultation 'Reducing crime and fear of crime' was ranked as a high priority, as it was rated as highly important by respondents, and satisfaction levels in relation to this outcome were low. The key messages from the comments received in relation to this outcome suggest some people feel: there is a lack of police presence and CCTV; and that drugs and alcohol are fuelling the problem. Comments suggested some people feel crime and anti-social behaviour are having a negative effect on the night time economy.

The full Wrexham PSB well-being assessment (March 2017) can be found [here](#)

## Public Perception

A survey was undertaken between November 2016 and March 2017 to understand how safe residents feel in Wrexham. The consultation was open to all, and widely publicised via the "Council News" publication, local media outlets, partner agencies, social media, and the local authority's dedicated consultation Twitter account.

The survey was available to complete:

- Online via Your Voice Wrexham
- Offline, with hard copies being made available from each library throughout the county borough, and the Contact Centre
- Residents also opted to share their thoughts by responding to tweets promoting the survey.

There were a total of 1,284 responses to the consultation and key headlines include:

- Compared to residents of other UK towns do you think your fear of being a victim of crime in Wrexham is<sup>1</sup>: Higher than average (45%), Average (45%), Lower than average (11%).

- When asked: Which of information sources influenced your response about your fear of being a victim of crime in Wrexham<sup>2</sup>? The top answer was Personal Experience (62%) followed by Local new outlets e.g. Wrexham Leader and Wrexham.com (54%).
- When asked specifically about where a resident lives, (within a 2 mile radius of their home) The top issue was Environmental e.g. litter or rubbish (including fly tipping) or dog fouling. From a community safety perspective the top issue was Street drinking, drunken behaviour and underage drinking (77%), followed by inconsiderate or antisocial behaviour (72%).
- Respondents were asked how safe they feel in different situations. When asked about walking alone in the day within a 2 mile radius of their home 27% said very safe and 44% said fairly safe. The same question was asked but during the hours of darkness and 13% said safe, and 40% said fairly safe.
- When asked how safe they felt at home alone , in the daytime 77% said very safe and 21% fairly safe, and in the hours of darkness 49% said very safe and 44% fairly safe.

## Strategic Priorities

There is much guidance, locally, regionally and nationally on what our community safety plan should encompass. Taking all of this into consideration Wrexham CSP are focusing on the following partnership strategic priorities:

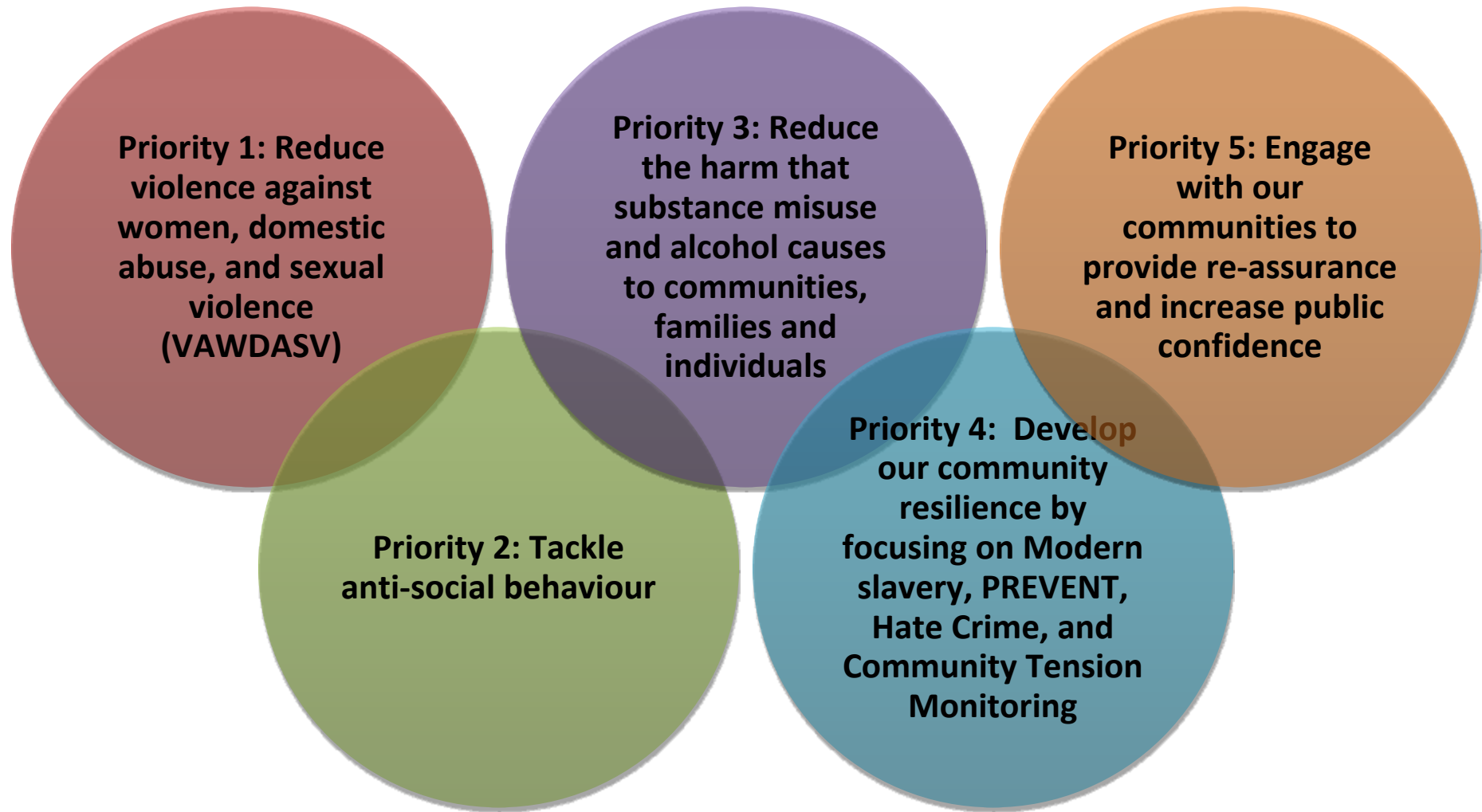
- Priority 1: Reduce violence against women, domestic abuse, and sexual violence (VAWDASV)**
- Priority 2: Tackle anti-social behaviour**
- Priority 3: Reduce the harm that substance misuse and alcohol causes to communities, families and individuals**
- Priority 4: Develop our community resilience by focusing on Modern slavery, PREVENT, Hate Crime, and Community Tension Monitoring**
- Priority 5: Engage with our communities to provide re-assurance and increase public confidence**

---

<sup>1</sup> Percentages total more than 100 because figures are rounded up to the nearest whole number

<sup>2</sup> The total number of responses exceeds 100% because respondents could select multiple answers to this question





## Priority One:

### Reduce violence against women, domestic abuse, and sexual violence (VAWDASV)

**Priority Lead:** WCBC Head Of Safeguarding

The objectives in the North Wales VAWDASV Strategy (2017-22) reflect the objectives in the Welsh Government national strategy on VAWDASV (2016-2021), but also have a regional and localised focus to specifically recognise the needs of North Wales. In Wrexham we have localised these objectives:

1.1 Contribute to the work programme of the Regional VAWDASV Board

#### **Prevention**

1.2 Increase awareness and challenge attitudes of VAWDASV across Wrexham.

1.3 Increase awareness in children and young people across Wrexham of the importance of safe, equal and healthy relationships and that abusive behaviour is always wrong.

#### **Protection**

1.4 Increased the focus on holding perpetrators to account and provide opportunities to change their behaviour based around victim safety.

1.5 Make prevention and early intervention a priority across Wrexham.

#### **Provision of support**

1.6 Ensure relevant professionals across Wrexham are trained to provide effective, timely and appropriate responses to victims and survivors

1.7 Provide victims equal access to appropriate resources, high quality needs led, strength based, gender responsive services across Wrexham

### Measuring Progress:

Through the quarterly CSP meetings and an annual assessment the CSP will review:

- The level of repeat victimisation for individuals discussed at MARAC
- Numbers of staff across CSP partners undertaking DA training to understand progress re raising awareness
- The number of awareness raising activities within schools/ youth services to increase young peoples awareness
- How the CSP has increased the awareness of DA in relation to older people
- How the CSP has developed their approaches to early intervention

## **Priority Two:**

### **Tackle anti-social behaviour**

**Priority Lead: WCBC Senior PIPS Officer (Community Safety)**

The current area of focus for Wrexham is our town centre and work will focus in the following areas:

- 2.1 Prevent and reduce anti-social behaviour linked to NPS in Wrexham by supporting work around rough sleeping, begging, identifying hot spot areas, and challenging behaviour.
- 2.2 Ensure a rapid referral process is in place and accessible for the visible vulnerable in Wrexham and mainstream the funding for this.
- 2.3 Ensure cohort of vulnerable individuals identified in the town centre are supported in the most appropriate way.
- 2.4 Ensure all aspects of the ASB legislation are considered and used by partners to address our local issues.

We will also look at other areas of the county borough:

- 2.5 Develop community resilience in our rural areas by investigating innovative approaches to tackling antisocial behaviour and encouraging communities to invest in these approaches.

### **Measuring Progress:**

- Individuals within the targeted cohort show positive engagement with services.
- An increase in the number of interventions utilised to tackle ASB in our communities.
- A decrease in the levels of ASB in the county borough
- A decrease in the levels of ASB in the town centre.
- An increase in the number of key partners utilising the Community MARAC



## Wrexham Community Safety Partnership (CSP) Action Plan, 2018- 2019

- An increased number of local residents subscribing to and accessing WCBC community safety updates in relation to this topic
- An increase in the number of known NPS users positively engaging with local support services.
- Monitor and determine a baseline for the levels of alcohol related violence in the town centre

## **Priority 4:**

### **Develop our Community Resilience by focusing on Modern slavery, PREVENT, Hate Crime, and Community Tension Monitoring**

**Priority Lead:** WCBC Senior PIPS Officer (Community Cohesion & Equalities)

Themes surrounding this work are both complex and wide ranging. In Wrexham we will:

- 4.1 Develop, agree and monitor a Wrexham Modern Slavery plan that ensures we effectively tackle Modern Slavery and discharge our duties under the Modern Slavery Act
- 4.2 Refresh our approach to Community Tension Monitoring to ensure issues are dealt with in a timely and appropriate way.
- 4.3 Understand the patterns of Hate Crime in Wrexham and develop an action plan.
- 4.4 Develop a partnership response to effectively address the Prevent Duty; including the completion of a Prevent risk assessment; refresh of the Prevent Action Plan and oversight of Prevent Delivery across Wrexham.

#### **Measuring Progress:**

- Increase the number of people that are aware of the Prevent Duty responsibilities.
- Increase the number of people that are aware of Modern Slavery Duty responsibilities.
- Increase awareness of community tension reporting process.
- Increase awareness of how to report hate crime.

We will also monitor the following indicators that we will contribute towards but are not solely accountable for:

- Monitor the number of referrals to the National Referral Mechanism for Modern Slavery.
- Monitor the number of community tensions reported through the community safety inbox.
- Monitor the number of people reporting hate crime
- Monitor the number of channel panel referrals.

## Priority 5:

### Engage with our communities to provide re-assurance and increase public confidence

**Priority Lead:** WCBC Community Safety Team (PIPS)

As part of our statutory duty as a CSP we need to understand the Wrexham public's perception of safety across the county borough and work together to improve this perception. We also need to understand times and locations of high demand and work together to manage event, locations, and impacts the time of year can have on community safety. In Wrexham we will:

- 5.1 Undertake an annual Perceptions of Safety Survey and develop an action plan to address issues raised.
- 5.2 Support the work of the Wrexham Safety Advisory Group (SAG) to provide appropriate guidance to ensure events in the borough are safe and successful.
- 5.3 Develop a 'calendar of events' so that key seasonal projects promote a prevention message eg Drink Less Enjoy More, Operation Bang, post exam celebrations, Halloween, Christmas, major sporting events.
- 5.4 Using police led intelligence target specific hot spots across the county borough in order to reduce crime levels and provide re-assurance, eg Asian gold, car thefts, garden building thefts, tacking doorstep crime.
- 5.5 Work to develop meaningful consultation, conversations and intelligence from the public on the current community safety agenda and develop our use of social media to support this.

#### Measuring Progress:

- An increase in the number of participants in the Perceptions of Safety Survey who say that they feel safe in their local area and in the town centre.
- An increase in the number of residents following the community safety facebook and twitter feeds.
- Maintain the levels of victim based crime
- Reduction in the levels of acquisitive crime
- An increase in the number of relevant event organisers engaging with the SAG process
- An increase in the number of SAG debriefs held to identify areas of good practice, areas to improve and lessons learned.

## **Reporting Arrangements:**

The review undertaken by Welsh Government in 2017 recognises the difficulties of measuring community safety initiatives as they are multi layered and complex.

We will however draw on qualitative and quantitative data from a variety of sources, including project evaluation and feedback from residents. Wrexham CSP will monitor progress against our strategic priorities at our quarterly meetings and through our work programme.

We will also attend the Safeguarding Communities and Well-being Scrutiny Committee on a six monthly basis as per the Crime and Disorder Scrutiny protocol.